

WAAS CH 53437 W14A	APP CRS 139°	Rwy ldg TDZE Apt Elev	5004 30 32
--	------------------------	-----------------------------	---------------------------------------

RNAV (GPS) RWY 14

CALHOUN COUNTY (PKV)

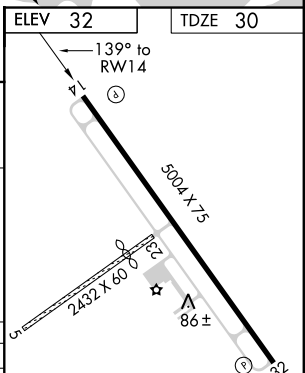
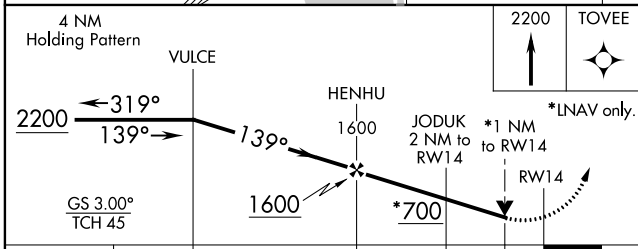
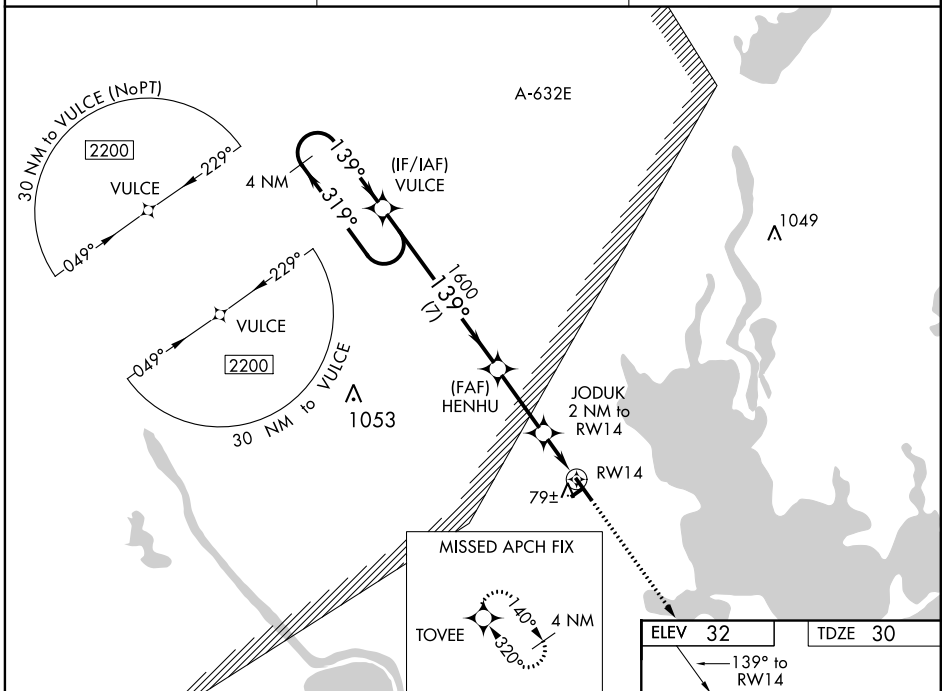
⚠ For uncompensated Baro-VNAV systems, LNAV/VNAV NA below -15°C (5°F) or above 54°C (130°F). When local altimeter setting not received, use Victoria altimeter setting and increase all DA/MDA 60 feet and visibilities ¼ mile. DME/DME RNP-0.3 NA. Baro-VNAV and VDP NA with Victoria altimeter setting. Helicopter visibility reduction below ¾ SM NA. Night landing: Rwy 32 NA. Circling NA to Rwy 5 and 23.

MISSED APPROACH:
Climb to 2200 direct TOVEE and hold.

AWOS-3
118,275

HOUSTON CENTER
128,15 350.3

UNICOM
122.8 (CTAF) **①**



CATEGORY	A	B	C	D
LPV DA	280-¾	250 (300-¾)		NA
LNAV/VNAV DA	280-¾	250 (300-¾)		NA
LNAV MDA	440-1	410 (500-1)	440-1½ 410 (500-1½)	NA
C CIRCLING	480-1 448 (500-1)	500-1 468 (500-1)	560-1½ 528 (600-1½)	NA

MIRL Rwy 14-32 **①**

SC-5, 23 JUN 2016 to 21 JUL 2016

SC-5, 23 JUN 2016 to 21 JUL 2016