

WAAS CH <b>58037</b> <b>W32A</b>	APP CRS <b>319°</b>	Rwy ldg TDZE Apt Elev	<b>5004</b> <b>30</b> <b>32</b>
--	------------------------	-----------------------------	---------------------------------------

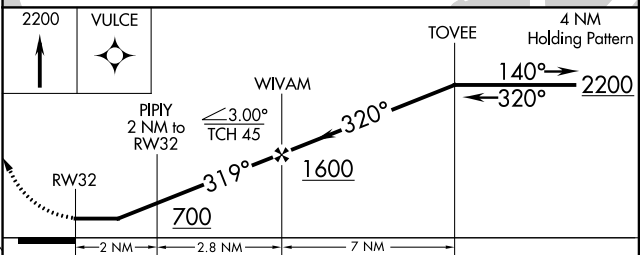
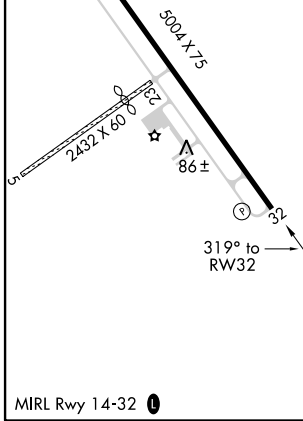
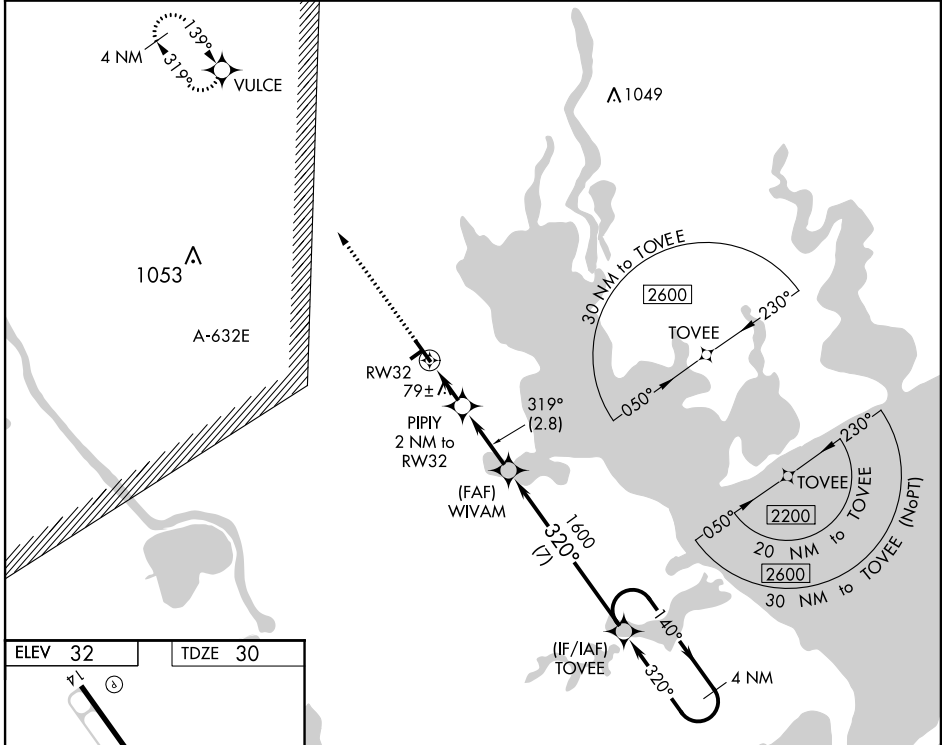
# RNAV (GPS) RWY 32

CALHOUN COUNTY (PKV)

**⚠** When local altimeter setting not received, use Victoria altimeter setting and increase all MDA 60 feet and increase LNAV Cat C and Circling Cat C visibilities ¼ mile.  
 DME/DME RNP-0.3 NA. Helicopter visibility reduction below 1 SM NA.  
 Night landing: Rwy 32 NA. Circling NA to Rwy 5 and 23.

MISSED APPROACH: Climb to 2200 direct VULCE and hold.

AWOS-3 <b>118.275</b>	HOUSTON CENTER <b>128.15 350.3</b>	UNICOM <b>122.8 (CTAF) 0</b>
--------------------------	---------------------------------------	---------------------------------



CATEGORY	A	B	C	D
LP MDA	340-1	310 (400-1)		NA
LNAV MDA	400-1	370 (400-1)		NA
<b>C</b> CIRCLING	480-1 448 (500-1)	500-1 468 (500-1)	560-1½ 528 (600-1½)	NA

SC-5, 23 JUN 2016 to 21 JUL 2016

SC-5, 23 JUN 2016 to 21 JUL 2016