

PORT LAVACA, TEXAS

AL-5904 (FAA)

15288

VORTAC PSX 117.3 Chan 120	APP CRS 244°	Rwy ldg TDZE Apt Elev	N/A N/A 30
--	------------------------	-----------------------------	---------------------------------------

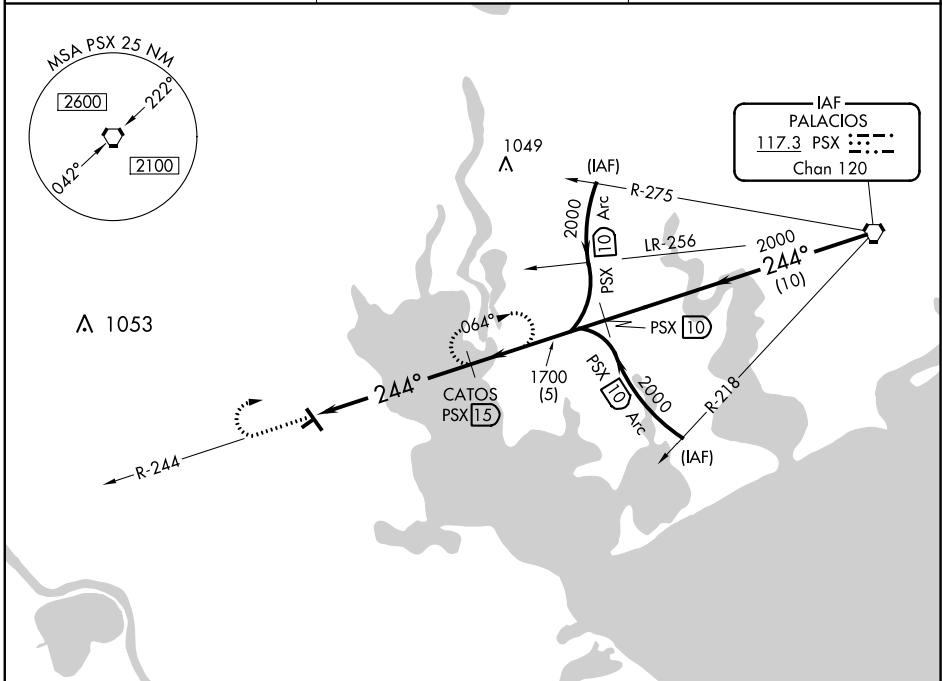
VOR/DME-A

CALHOUN COUNTY (PKV)

NA When local altimeter setting not received, use Victoria altimeter setting. Circling NA to Rwy 5 and 23. Night landing: Rwy 32 NA. Helicopter visibility reduction below 1 SM NA.

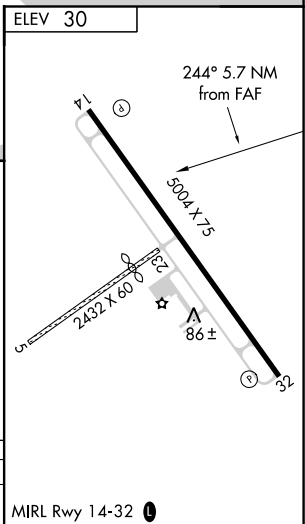
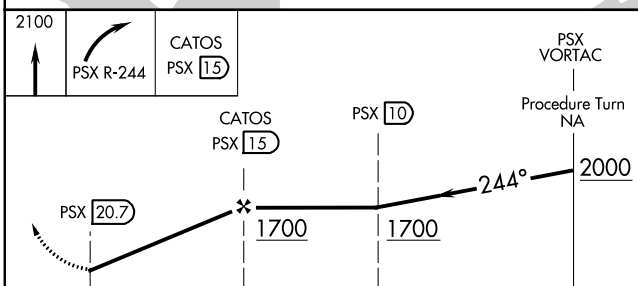
MISSED APPROACH: Climb to 2100, then right turn via PSX VORTAC R-244 to CATOS/PSX 15 DME and hold.

AWOS-3 118.275	HOUSTON CENTER 128.15 350.3	UNICOM 122.8 (CTAF) 0
--------------------------	---------------------------------------	--



SC-5, 23 JUN 2016 to 21 JUL 2016

SC-5, 23 JUN 2016 to 21 JUL 2016



CATEGORY	A	B	C	D
CIRCLING	760-1 730 (800-1)	760-1¼ 730 (800-1¼)	760-2 730 (800-2)	NA

PORT LAVACA, TEXAS
Amdt 4C 15OCT15

28° 39' N-96° 41' W

CALHOUN COUNTY (PKV)

VOR/DME-A